

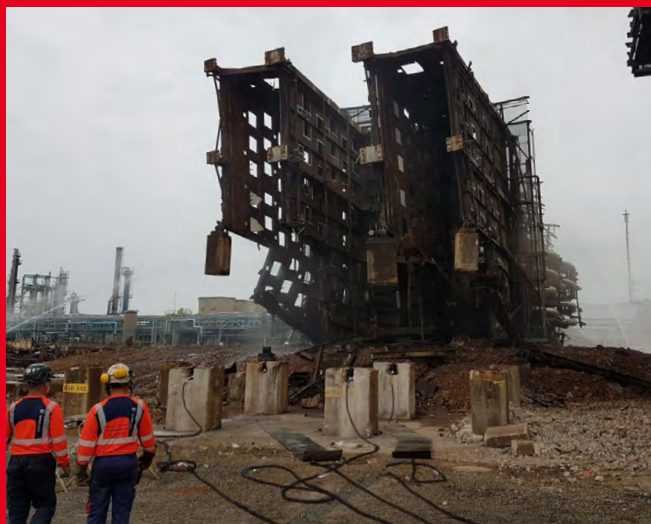


PRODUCT  
PAGE



Light weight easy to carry

**CUSTOM CYLINDERS ON REQUEST**



- Hydraulic cylinders, aluminium weight, single acting spring return, high pressure- Push force from 30 to 100 ton with range of strokes from 50 to 100 mm.

- Hydraulic cylinders made of high strength special aluminum alloy, light weight, easy to carry and very easy to handle. Used in applications in which reduced weight is an important factor.

- The guiding surfaces are sized to guarantee optimal performance in load offset absorption and stop-ring increases safety for the operator avoiding the over stroke of the piston.

- Equipped with high strength gaskets for maximum durability.

- 3/8" NPT female coupler with dust cap equipped.

- High strength saddle and possibility of mounting a tilting saddle for better distribution of the load to be lifted.

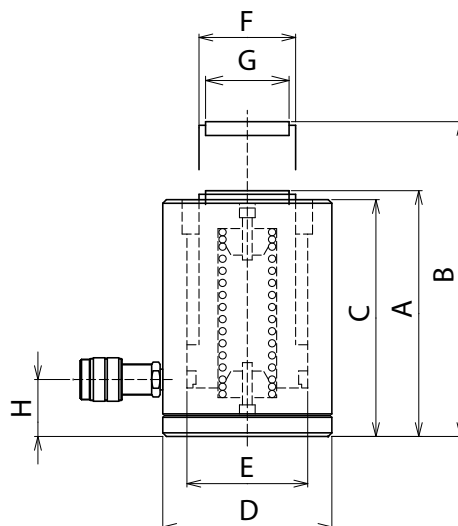
- The aluminum cylinders are different from those in steel and while offering advantages in terms of weight have a different behavior at fatigue. Hence the aluminum cylinder must not be used in intensive applications.

- All models feature carry handles.

- Possibility to design and produce custom made hydraulic cylinders on request, with dedicated geometries, performances and features.

**CRMA**

**30-100 ton**  
**Stroke 50-150 mm**  
**700 bar**

**CRMA**

CAP/Force	STROKE	MODEL	SECTION	VOLUME	MASS	DIMENSIONS (mm)							
ton (kN)	mm		cm <sup>2</sup>	cm <sup>3</sup>	kg	A	B	C	D	E	F	G	H
<b>30</b> / 303	50	CRMA-30/50-SH	44,2	221	4,7	181	231	177	100	75	60	40	34
	100	CRMA-30/100-SH		442	5,4	231	331	227					
<b>50</b> / 487	50	CRMA-50/50-SH	70,9	354	7,6	186	236	182	130	95	80	70	30
	100	CRMA-50/100-SH		709	10,3	236	336	232					
	150	CRMA-50/150-SH		1063	11,6	286	436	282					
<b>100</b> / 911	51	CRMA-100/50-SH	132,7	665	16,3	221	272	217	180	130	110	70	46
	102	CRMA-100/100-SH		1328	19,5	271	373	267					
	152	CRMA-100/150-SH		1992	23,1	321	473	317					

Different strokes and tonnages available.

## Different models of aluminium cylinders available

- CSEA series, single acting cylinders, load return
- CSEAGS series, single acting cylinders, load return, with lock nut
- CRIA series, double acting cylinders, oil return
- CRMAFO series, single acting cylinders